

# The Bison | America's Sacred Animal

In this lesson, students will learn how the bison is intertwined with the history and heritage of Native American tribes and its significance in Native American culture.

Grades: K-2		Subject: SS
Essential Question(s)	Why was the bison so important to Native Americans, and what can we learn from it about Native American cultures?	
Focus Standard(s)	D2.His.2.K-2: Compare life in the past to life today.	
Learning Objective	Students will be able to understand the importance of the bison to Native Americans by completing a matching activity and reflection.	
Materials/Resources	<a href="#">The Bison   America's Sacred Animal</a> Accompanying matching activity	
Vocabulary	emerged: came out ecosystem: community of plants, animals, and the environment realm: world; kingdom revere: respect greatly; admire	
Anticipatory Set	Ask students, "What do you know about bison?" (If needed, show a picture of what a bison looks like.) Allow time for students to share what they know or what they think they know about bison.	
Mini-Lesson	Invite students to follow along as you read aloud the article, <i>The Bison   America's Sacred Animal</i> . Pause throughout the reading to discuss how Native Americans used every part of the bison and what this can teach us about their culture.	
Activity	After reading and discussing the article, display the images from the Slide Show. Then ask students to complete the matching activity as they watch the accompanying video found within the article.	
Closure/Assessment	After students complete the activity, ask them the following question, "How important were the bison to Native Americans? How do you know?"	
Differentiation	Adjust lexile® levels as needed. Use accessibility and Read to Me features. Print copies of articles.	

Name: \_\_\_\_\_

**Article:** The Bison | America's Sacred Animal

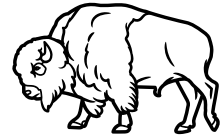
**Part I**

**Directions:** Draw a line from the description to the correct image.

National mammal of the United States



Food for the bison



Used to make jewelry or arrowheads



Where bison used to live



Used to make clothes and tents



**Part II**

**Directions:** Read and rate.

How important were the bison to Native Americans?

Not very    Very

Do you think it's important to protect the bison?

Not very    Very

# Answer Key

Name: \_\_\_\_\_

**Article:** The Bison | America's Sacred Animal

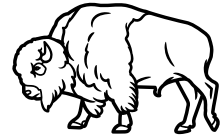
## Part I

**Directions:** Draw a line from the description to the correct image.

National mammal of the United States



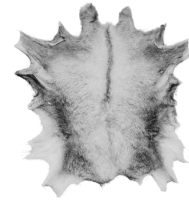
Food for the bison



Used to make jewelry or arrowheads



Where bison used to live



Used to make clothes and tents



## Part II

**Directions:** Read and rate.

How important were the bison to Native Americans?

Not very



Very

Do you think it's important to protect the bison?

Not very



Very